



**STANDARDS OF COVERAGE  
ANALYSIS**

**VOLUME 2 OF 2: MAP ATLAS**

**NOVATO FIRE PROTECTION DISTRICT**

**JULY 1, 2022**



# Novato Fire Protection District Map 1 General Geography

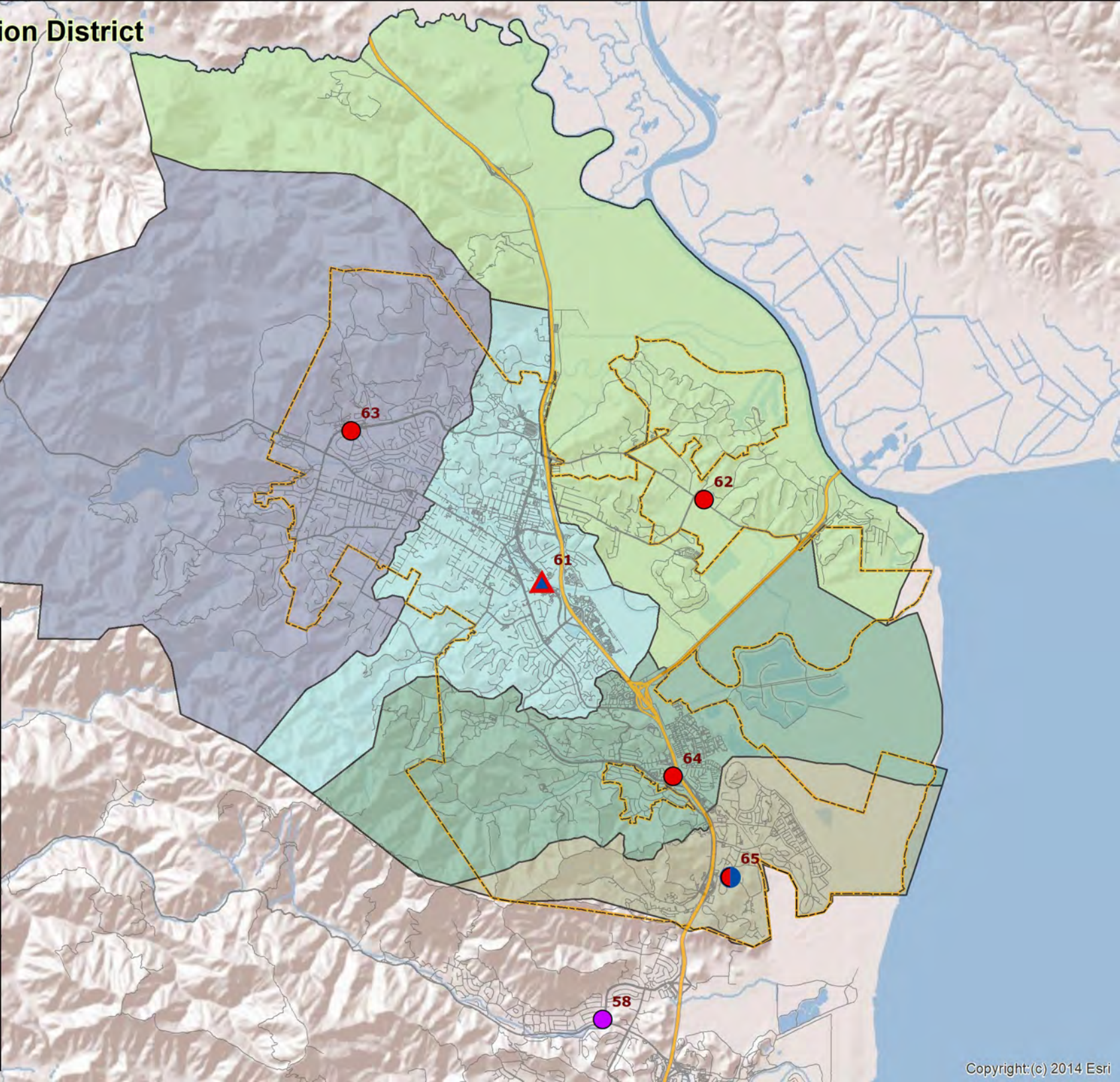
**Legend**

**Fire Stations**

- Engine
- Engine, Medic
- ▲ Engine, Medic, BC
- MA

**NFPD Response Areas**

- 61
- 62
- 63
- 64
- 65



# Novato Fire Protection District Map 2 Population Density By Block Group

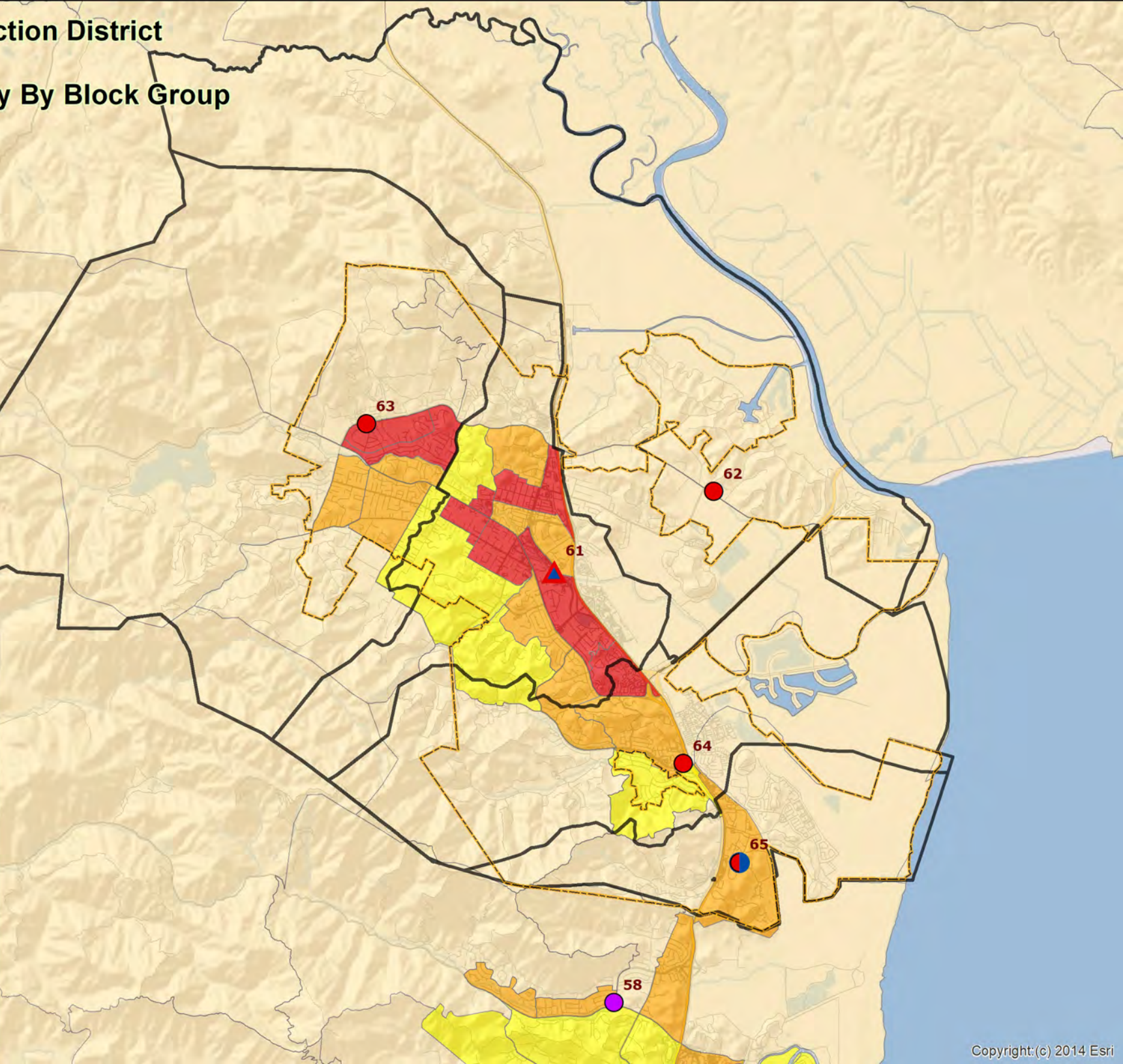
**Legend**

**Fire Stations**

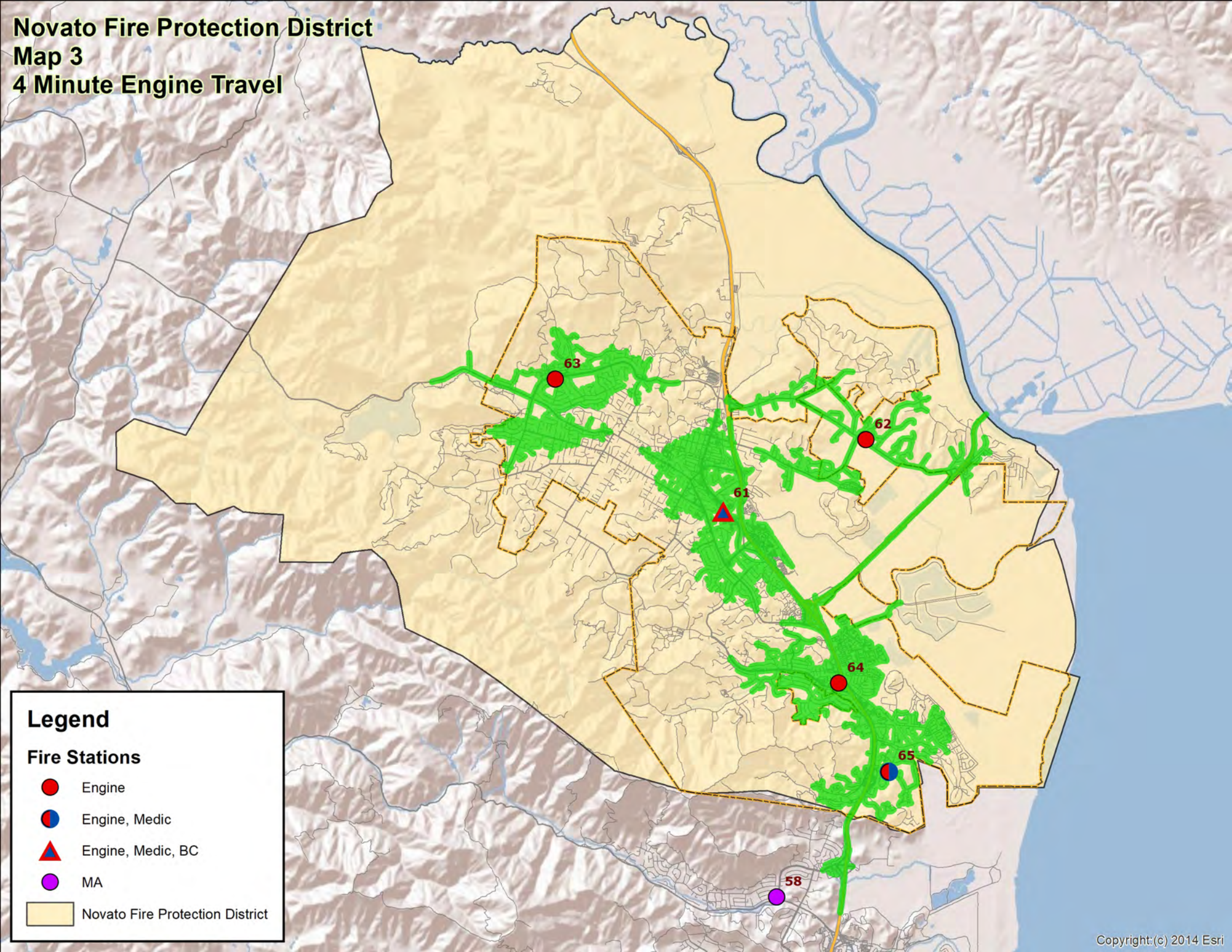
- Engine
- Engine, Medic
- ▲ Engine, Medic, BC
- MA

**Pop per Square Mile**

- 0 - 1,499
- 1,500 - 2,999
- 3,000 - 4,999
- More than 5,000



**Novato Fire Protection District**  
**Map 3**  
**4 Minute Engine Travel**



**Legend**

**Fire Stations**

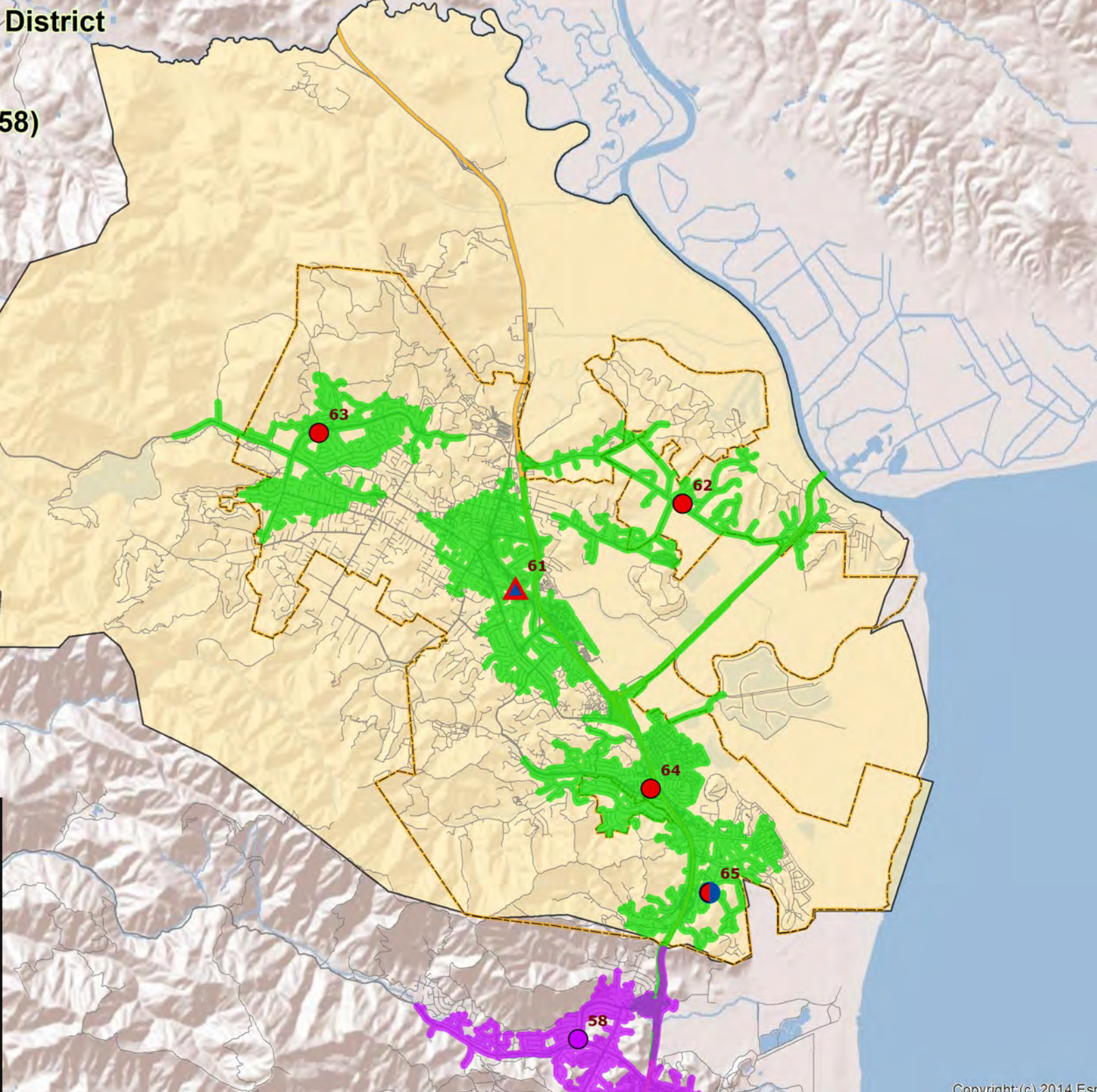
- Engine
- Engine, Medic
- ▲ Engine, Medic, BC
- MA
- Novato Fire Protection District

**Novato Fire Protection District  
Map 3a  
4 Minute Engine Travel  
With Auto Aid (Engine 58)**

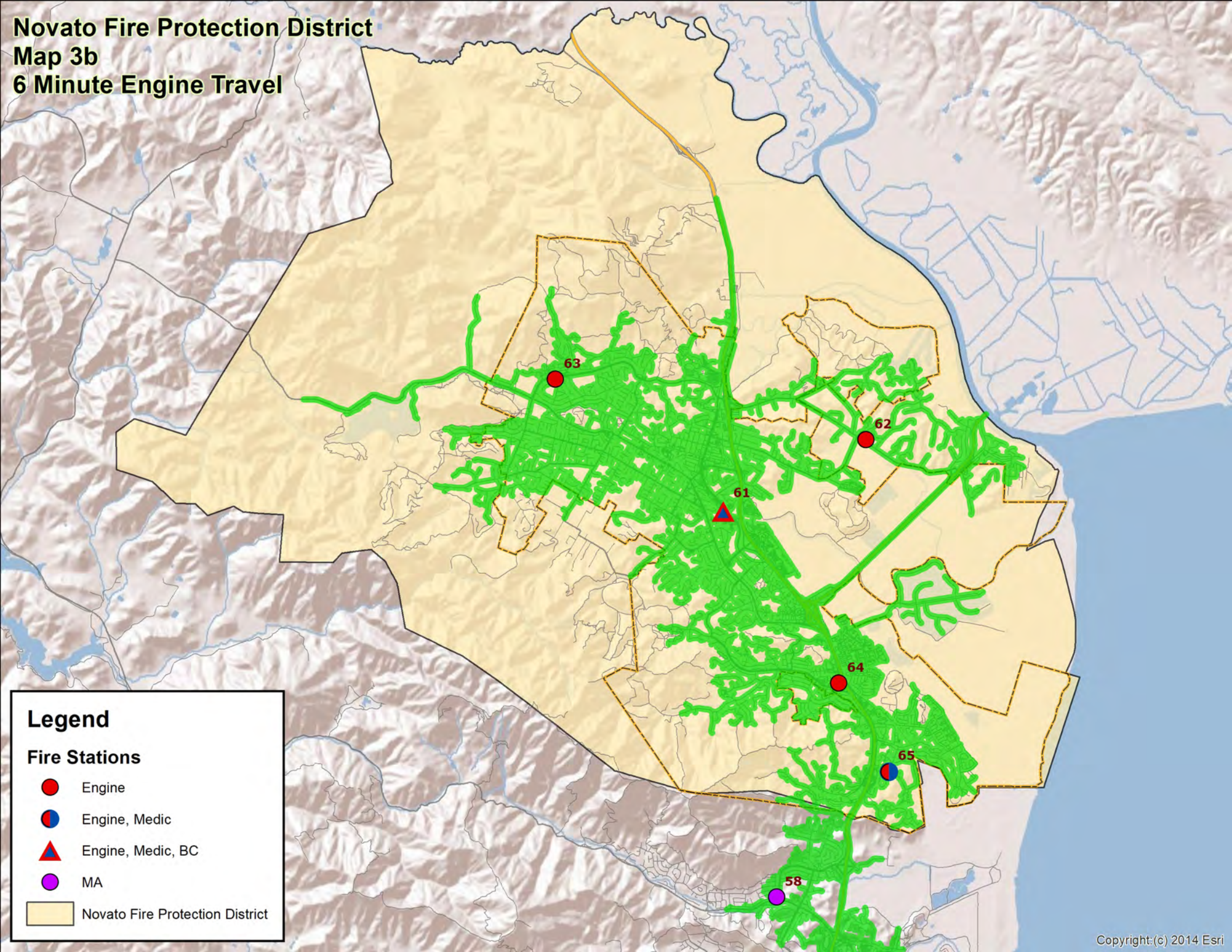
**Legend**

**Fire Stations**

- Engine
- Engine, Medic
- ▲ Engine, Medic, BC
- MA
- Novato Fire Protection District



**Novato Fire Protection District**  
**Map 3b**  
**6 Minute Engine Travel**

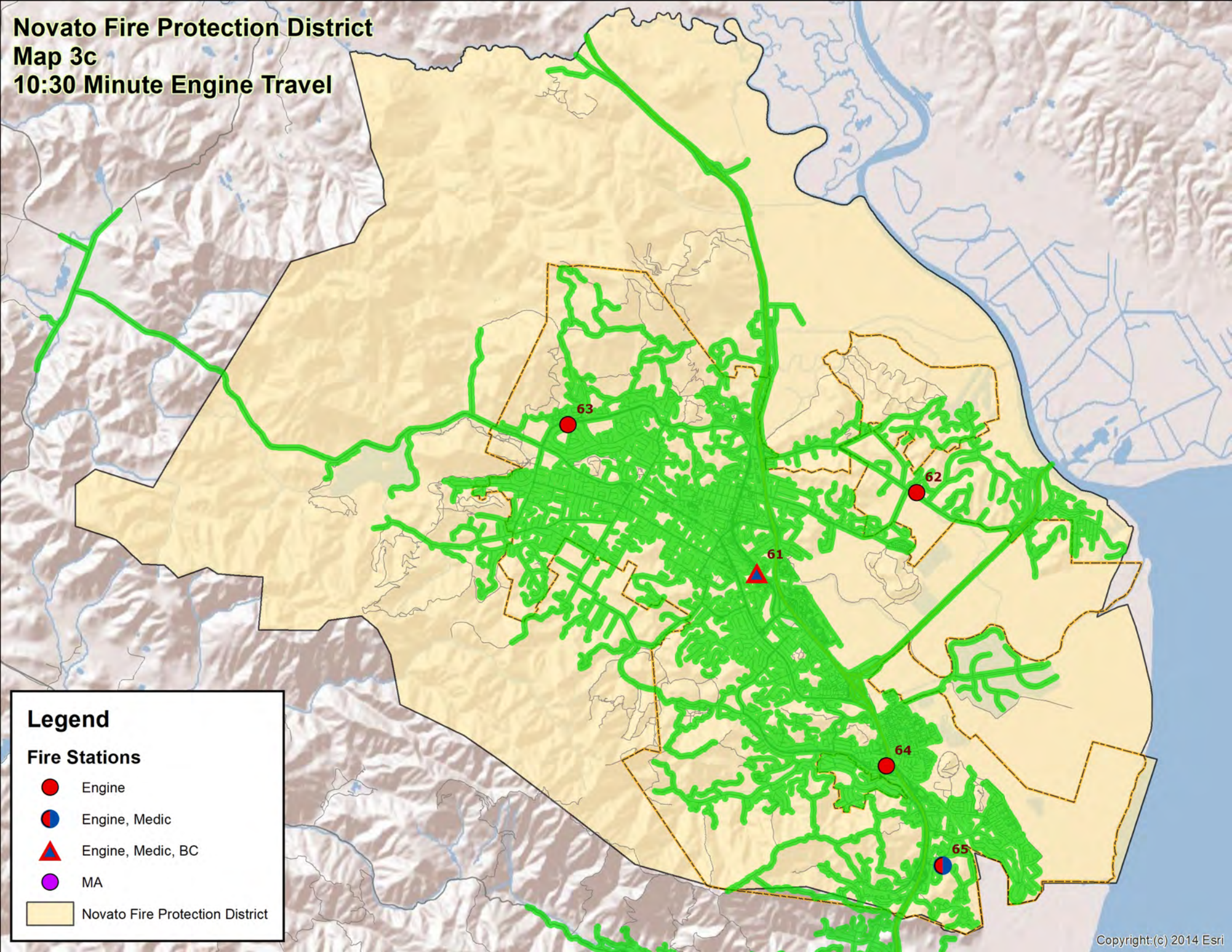


**Legend**

**Fire Stations**

- Engine
- Engine, Medic
- ▲ Engine, Medic, BC
- MA
- Novato Fire Protection District

**Novato Fire Protection District**  
**Map 3c**  
**10:30 Minute Engine Travel**



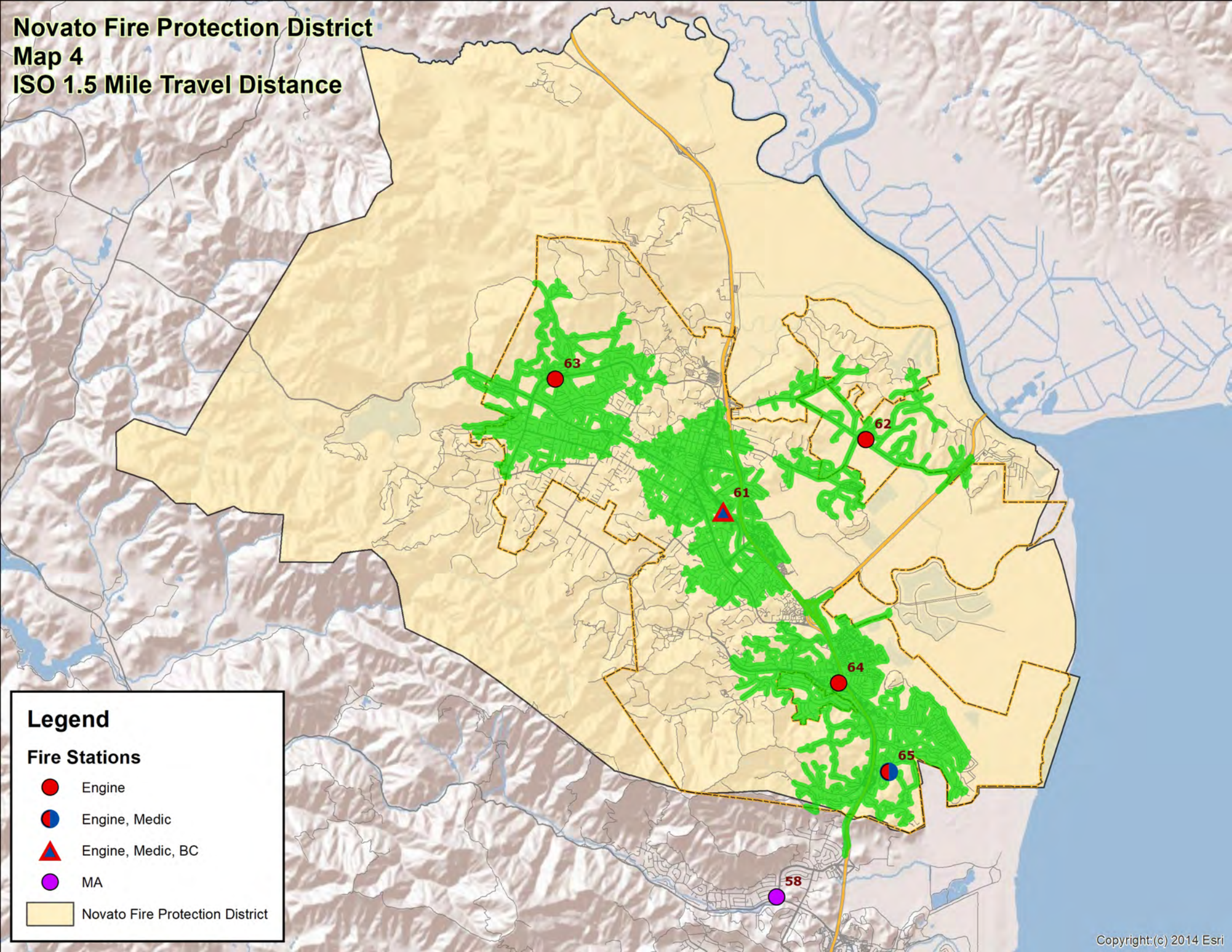
**Legend**

**Fire Stations**

- Engine
- Engine, Medic
- ▲ Engine, Medic, BC
- MA
- Novato Fire Protection District



**Novato Fire Protection District  
Map 4  
ISO 1.5 Mile Travel Distance**



**Legend**

**Fire Stations**

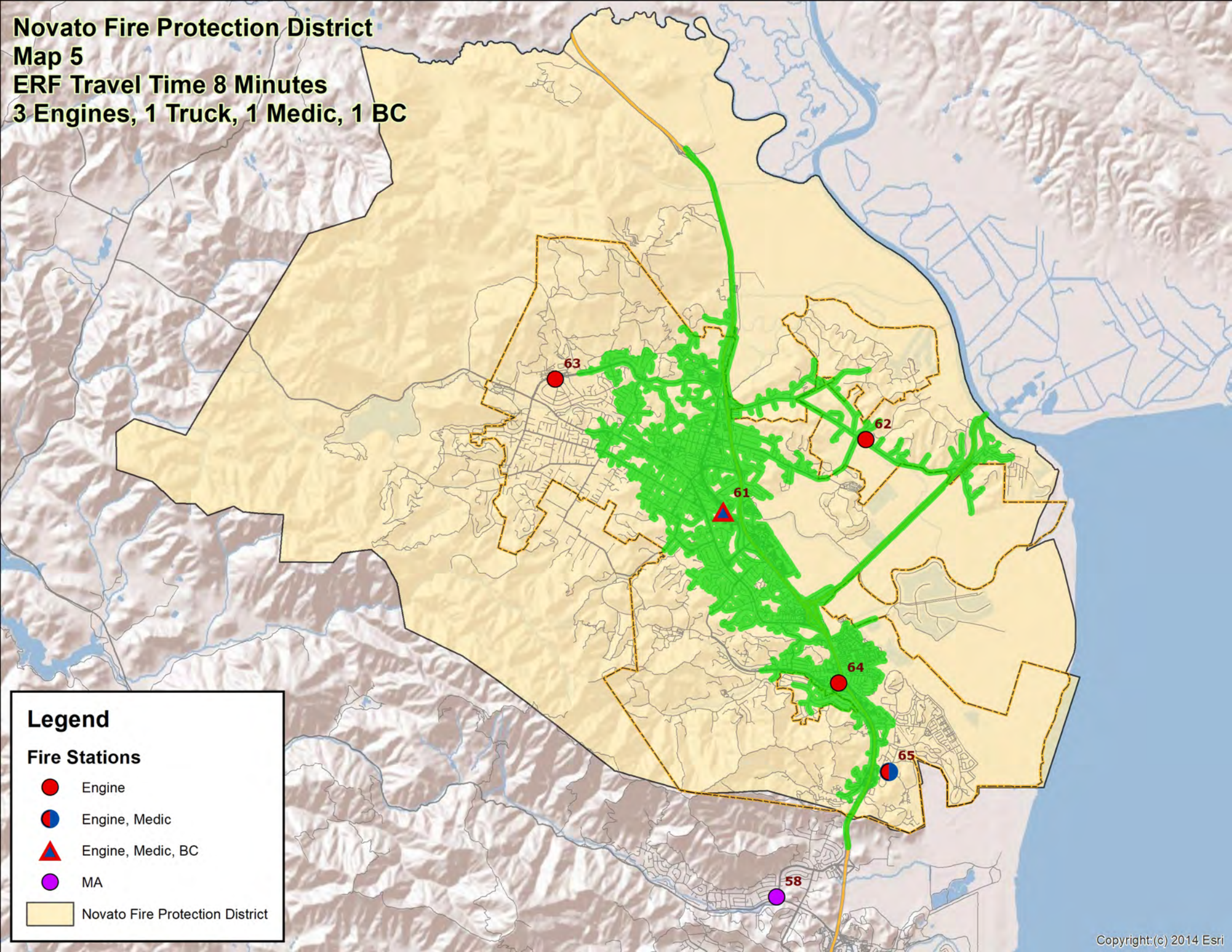
- Engine
- Engine, Medic
- ▲ Engine, Medic, BC
- MA
- Novato Fire Protection District

**Novato Fire Protection District**  
**Map 5**  
**ERF Travel Time 8 Minutes**  
**3 Engines, 1 Truck, 1 Medic, 1 BC**

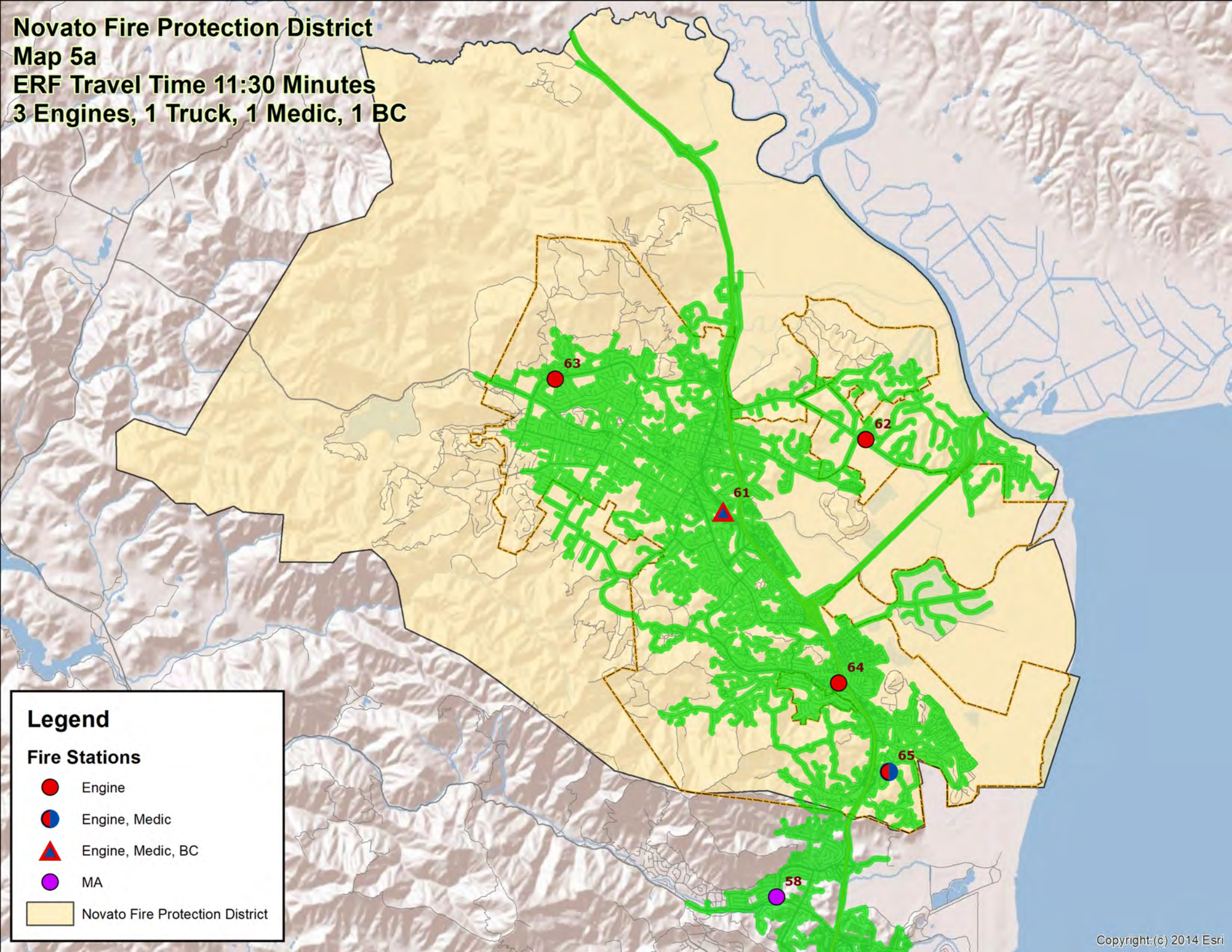
**Legend**

**Fire Stations**

- Engine
- Engine, Medic
- ▲ Engine, Medic, BC
- MA
- Novato Fire Protection District



**Novato Fire Protection District**  
**Map 5a**  
**ERF Travel Time 11:30 Minutes**  
**3 Engines, 1 Truck, 1 Medic, 1 BC**

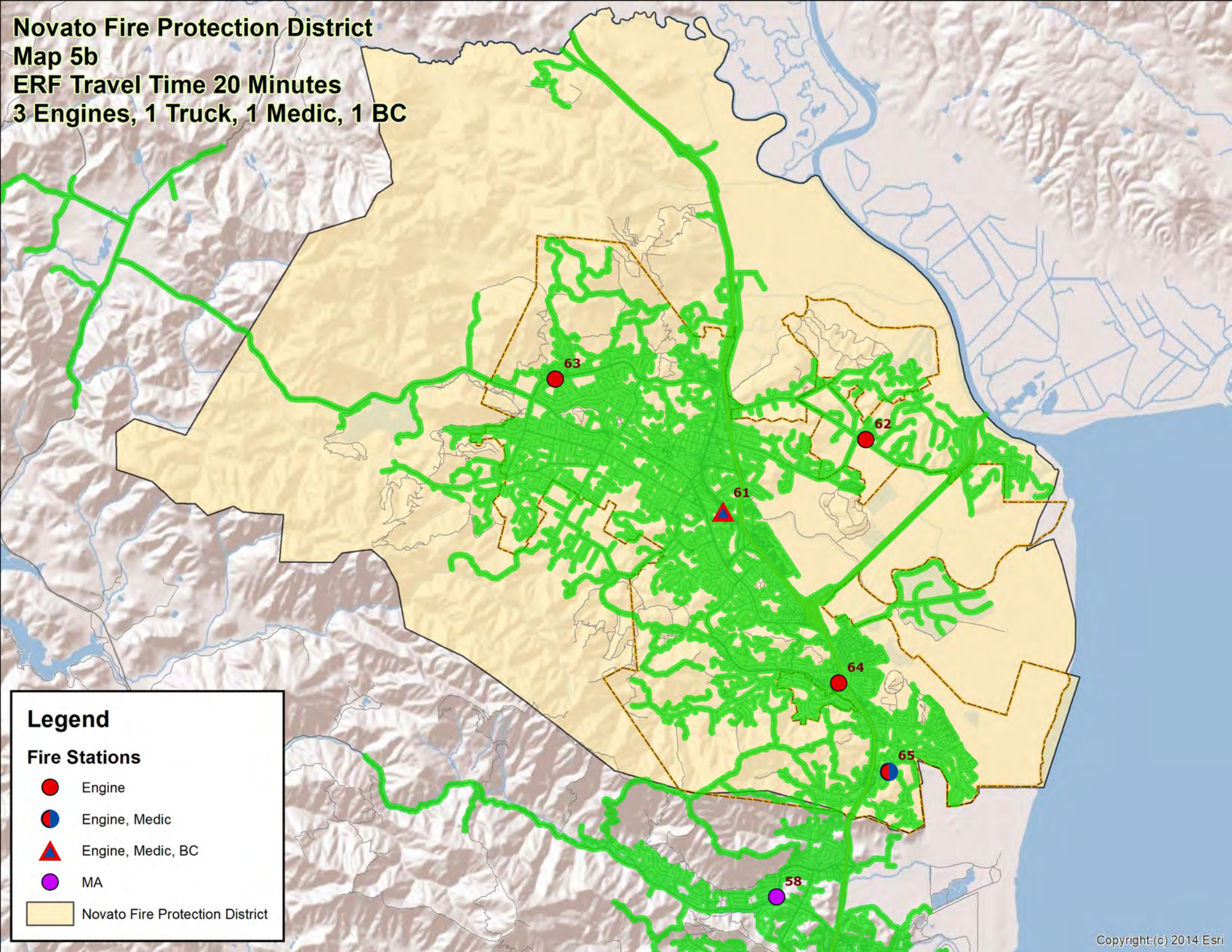


**Legend**

**Fire Stations**

- Engine
- Engine, Medic
- ▲ Engine, Medic, BC
- MA
- Novato Fire Protection District

**Novato Fire Protection District**  
**Map 5b**  
**ERF Travel Time 20 Minutes**  
**3 Engines, 1 Truck, 1 Medic, 1 BC**



**Legend**

**Fire Stations**

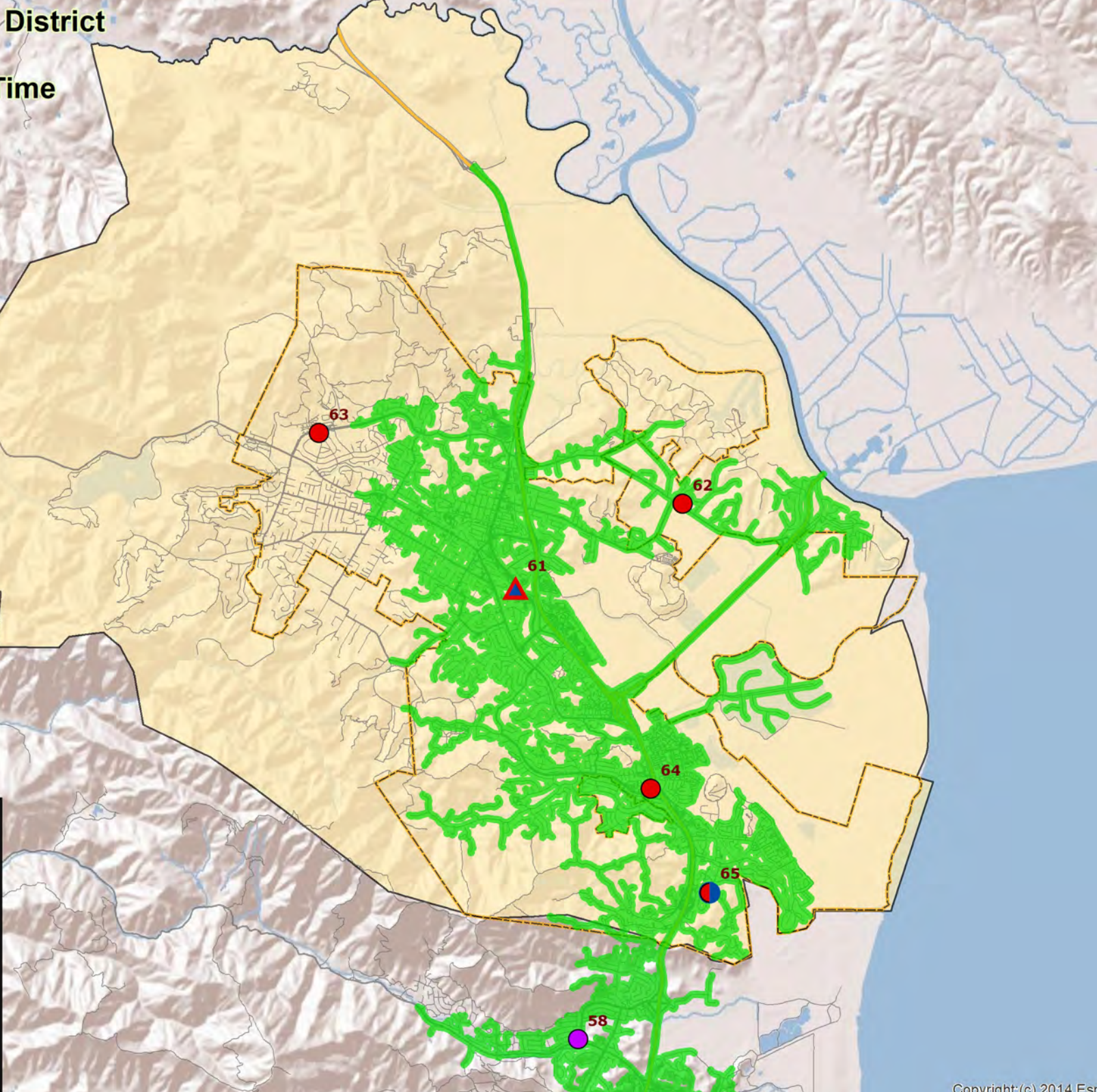
- Engine
- Engine, Medic
- ▲ Engine, Medic, BC
- MA
- Novato Fire Protection District

**Novato Fire Protection District**  
**Map 6**  
**8 Minute Truck Travel Time**  
**Station 64**

**Legend**

**Fire Stations**

- Engine
- Engine, Medic
- ▲ Engine, Medic, BC
- MA
- Novato Fire Protection District

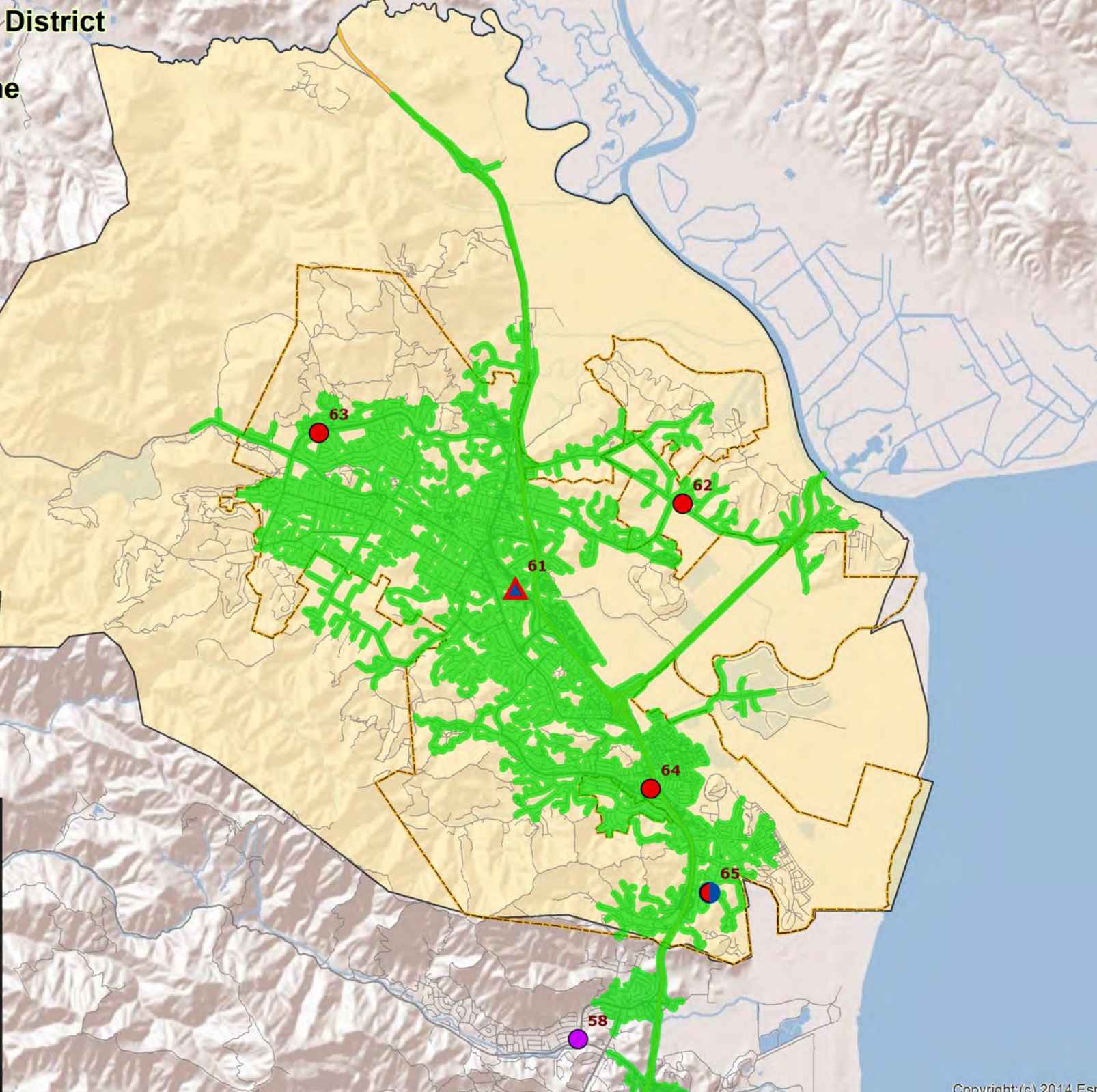


**Novato Fire Protection District**  
**Map 7**  
**8 Minute BC Travel Time**  
**Station 61**

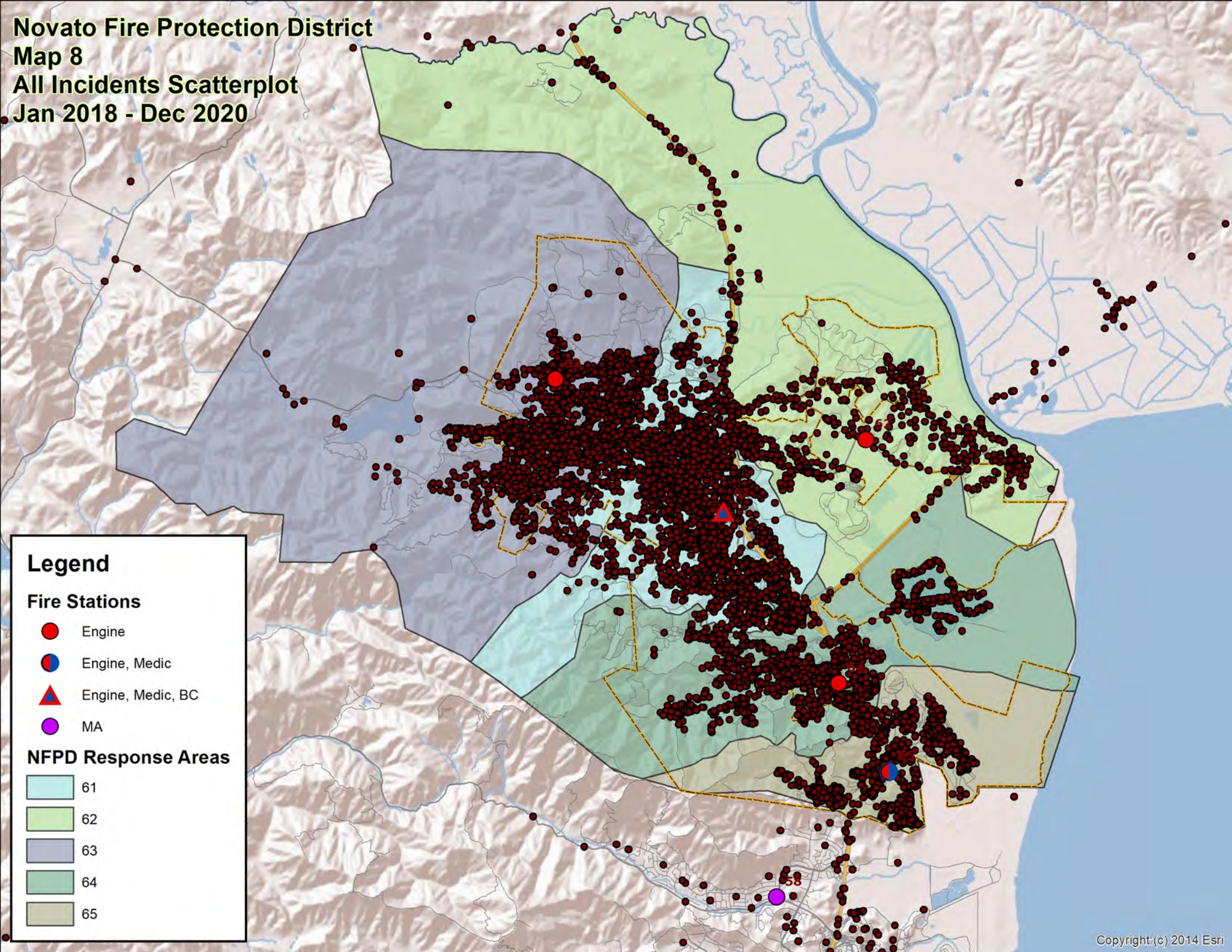
**Legend**

**Fire Stations**

- Engine
- Engine, Medic
- ▲ Engine, Medic, BC
- MA
- Novato Fire Protection District



**Novato Fire Protection District**  
**Map 8**  
**All Incidents Scatterplot**  
**Jan 2018 - Dec 2020**



**Legend**

**Fire Stations**

- Engine
- Engine, Medic
- ▲ Engine, Medic, BC
- MA

**NFPD Response Areas**

- 61
- 62
- 63
- 64
- 65

**Novato Fire Protection District**  
**Map 9**  
**All EMS/Rescue Incidents Scatterplot**  
**Jan 2018 - Dec 2020**

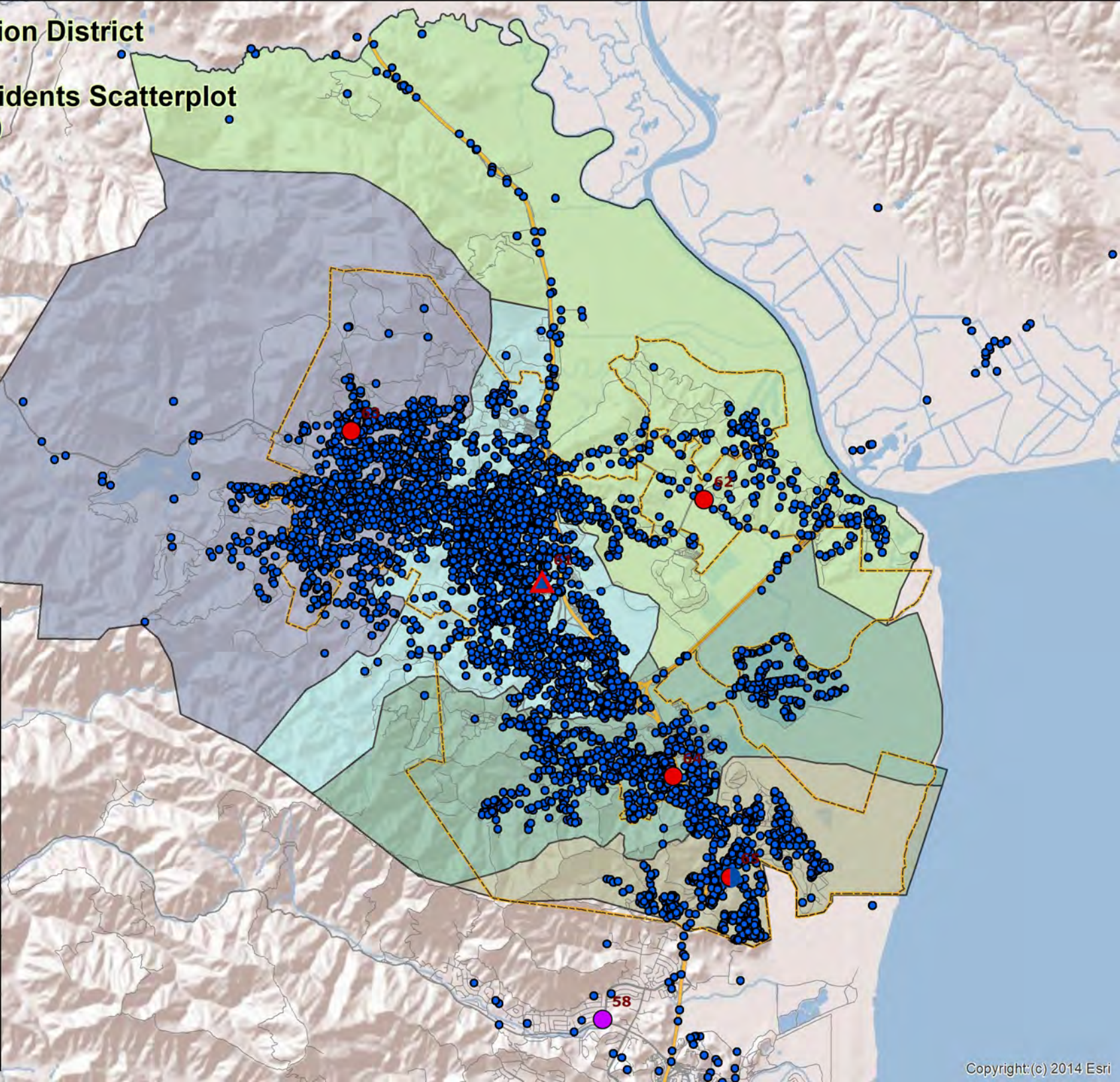
**Legend**

**Fire Stations**

- Engine
- Engine, Medic
- ▲ Engine, Medic, BC
- MA

**NFPD Response Areas**

- 61
- 62
- 63
- 64
- 65





**Novato Fire Protection District**  
**Map 10**  
**All Fires Scatterplot**  
**Jan 2018 - Dec 2020**

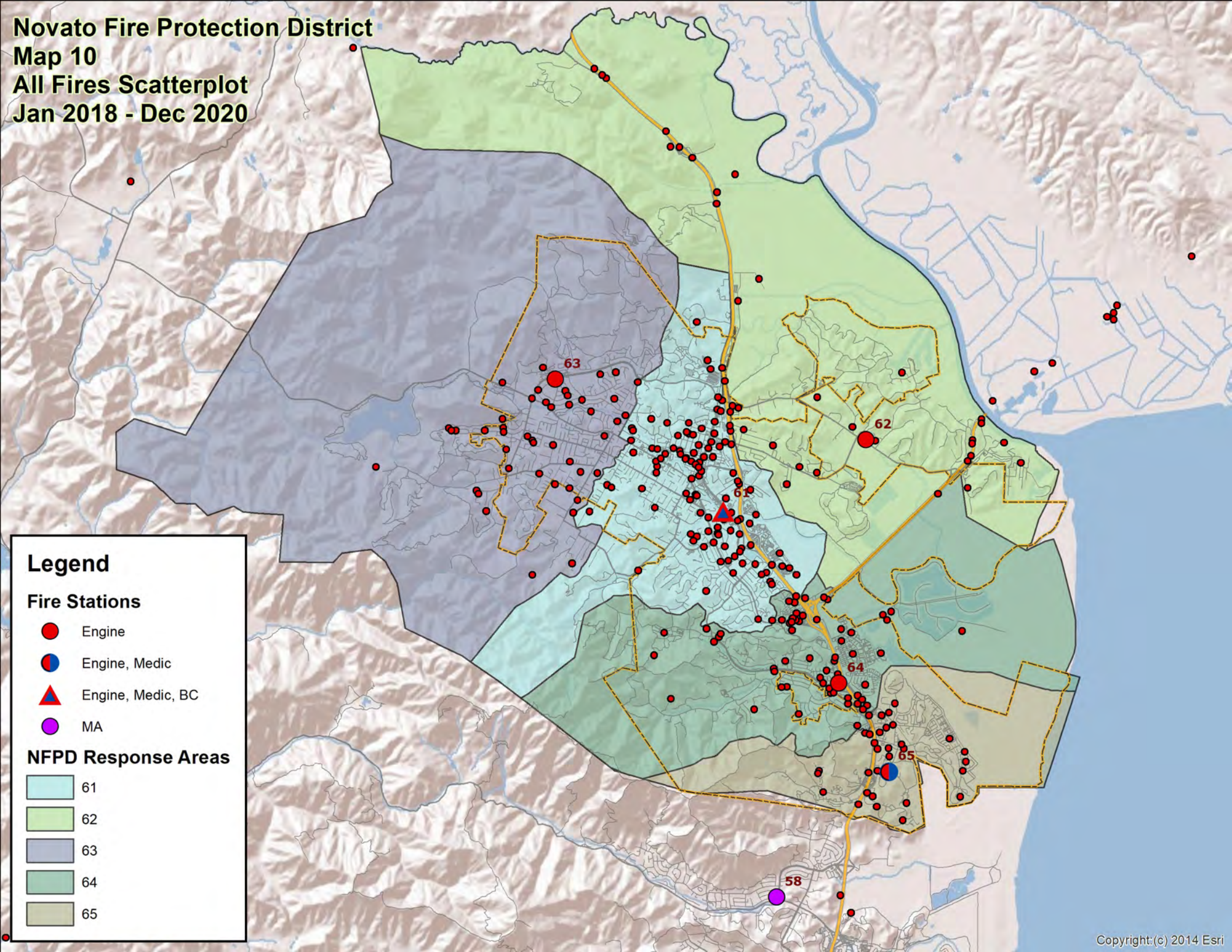
**Legend**

**Fire Stations**

- Engine
- Engine, Medic
- ▲ Engine, Medic, BC
- MA

**NFPD Response Areas**

- 61
- 62
- 63
- 64
- 65



**Novato Fire Protection District**  
**Map 11**  
**All Structure Fires Scatterplot**  
**Jan 2018 - Dec 2020**

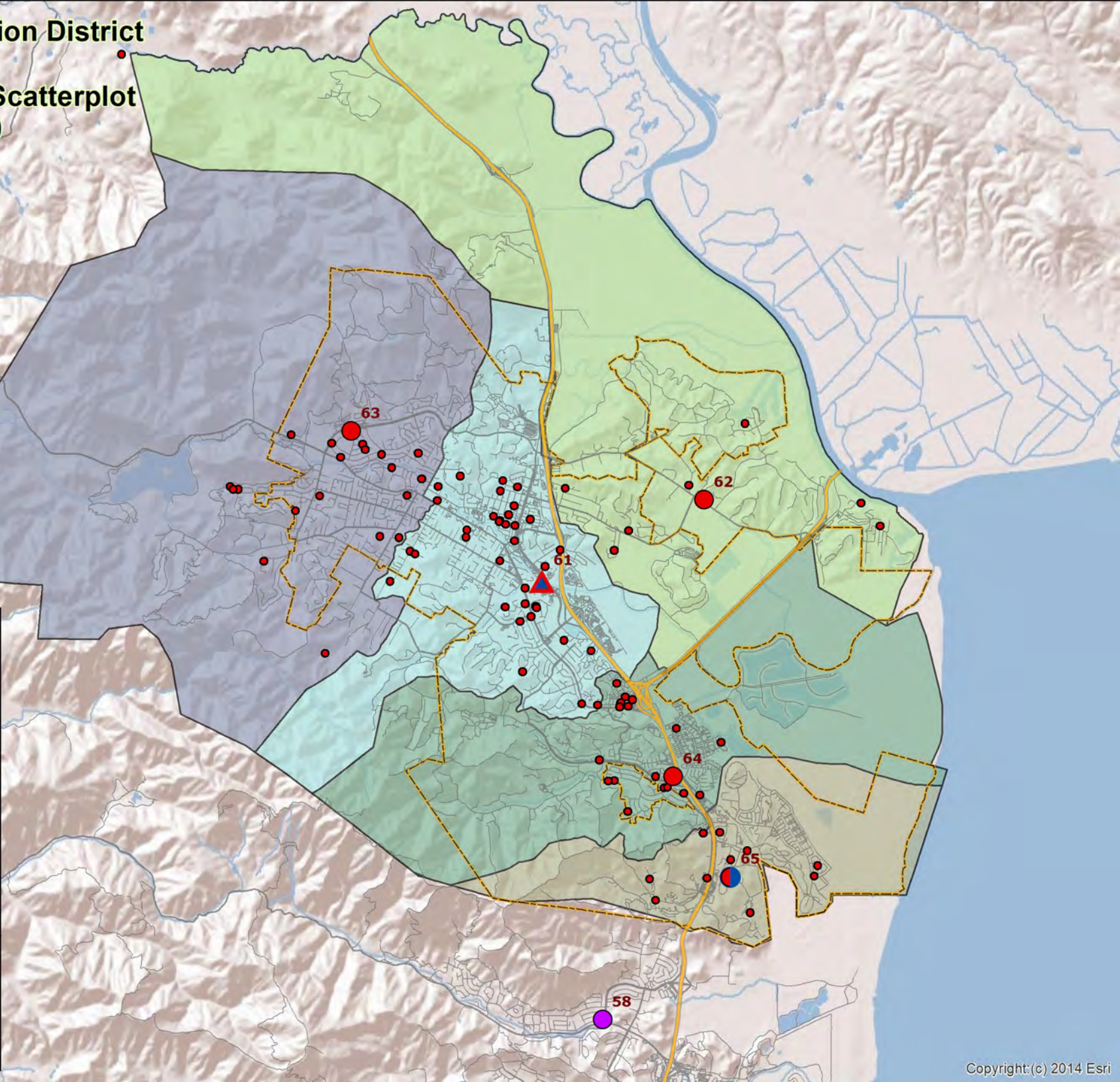
**Legend**

**Fire Stations**

- Engine
- Engine, Medic
- ▲ Engine, Medic, BC
- MA

**NFPD Response Areas**

- 61
- 62
- 63
- 64
- 65



**Novato Fire Protection District**  
**Map 12**  
**All EMS/Rescue Hotspots**  
**Jan 2018 - Dec 2020**

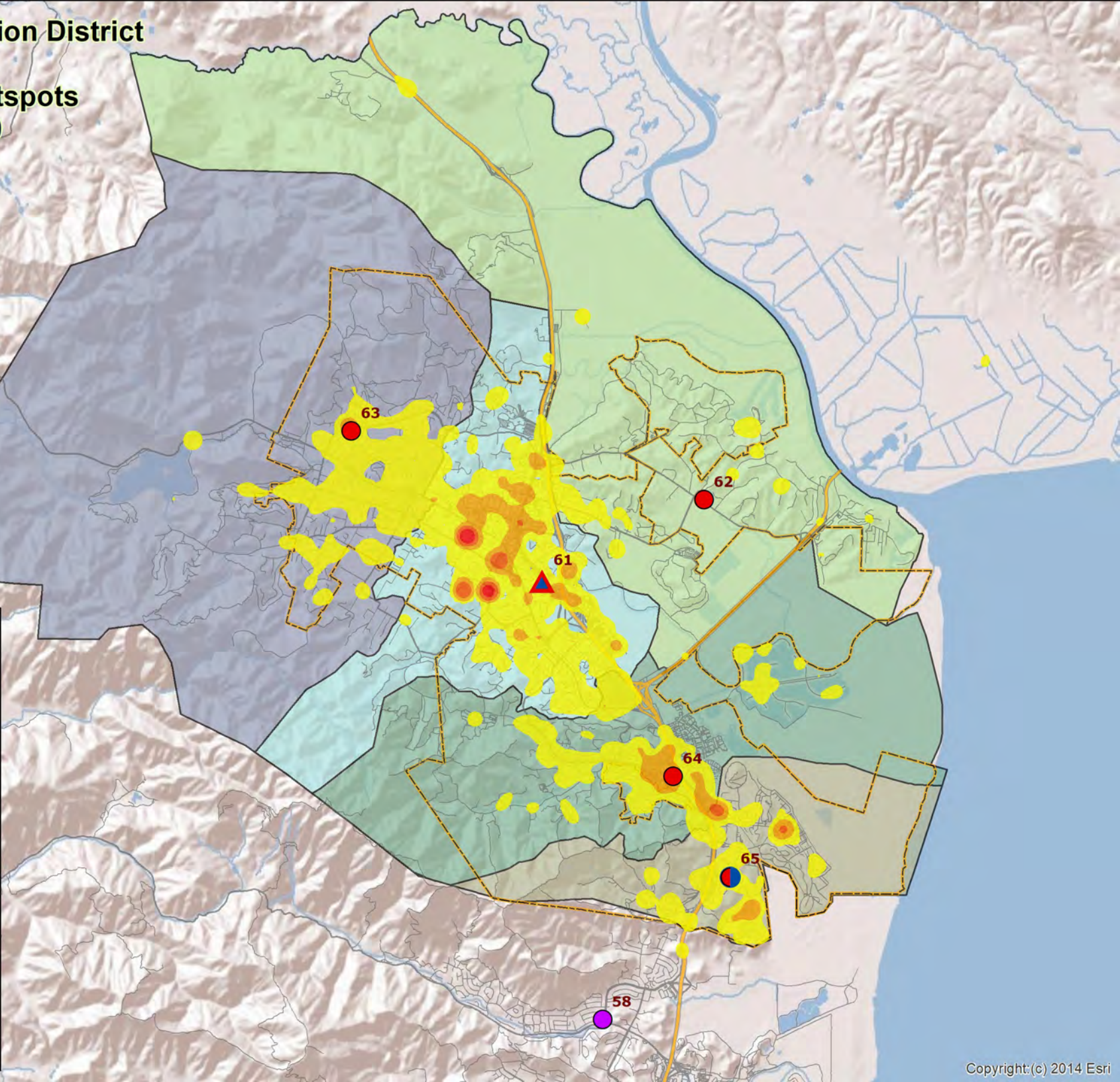
**Legend**

**Fire Stations**

- Engine
- Engine, Medic
- ▲ Engine, Medic, BC
- MA

**NFPD Response Areas**

- 61
- 62
- 63
- 64
- 65



**Novato Fire Protection District**  
**Map 13**  
**All Fires Hotspots**  
**Jan 2018 - Dec 2020**

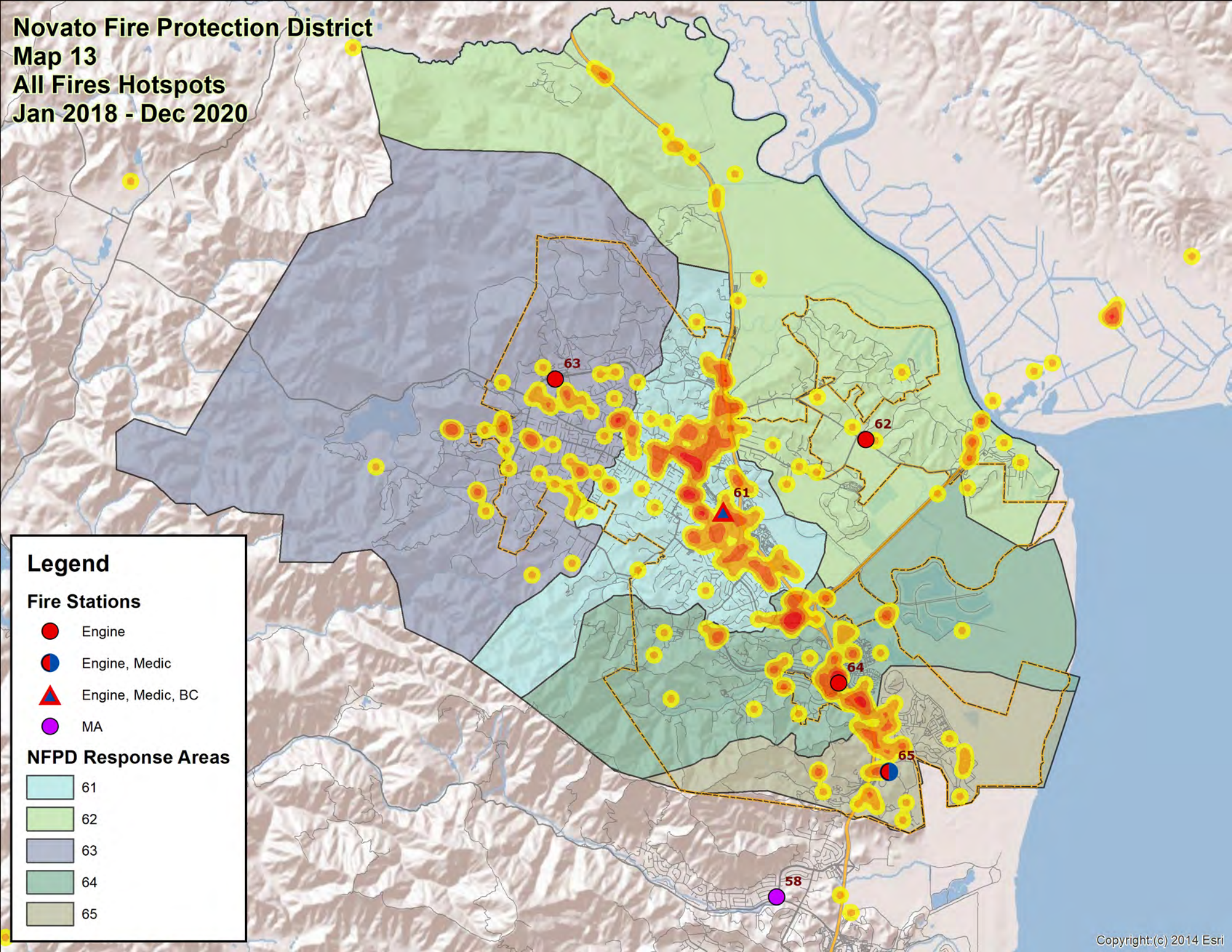
**Legend**

**Fire Stations**

- Engine
- Engine, Medic
- ▲ Engine, Medic, BC
- MA

**NFPD Response Areas**

- 61
- 62
- 63
- 64
- 65



**Novato Fire Protection District**  
**Map 14**  
**All Structure Fires Hotspots**  
**Jan 2018 - Dec 2020**

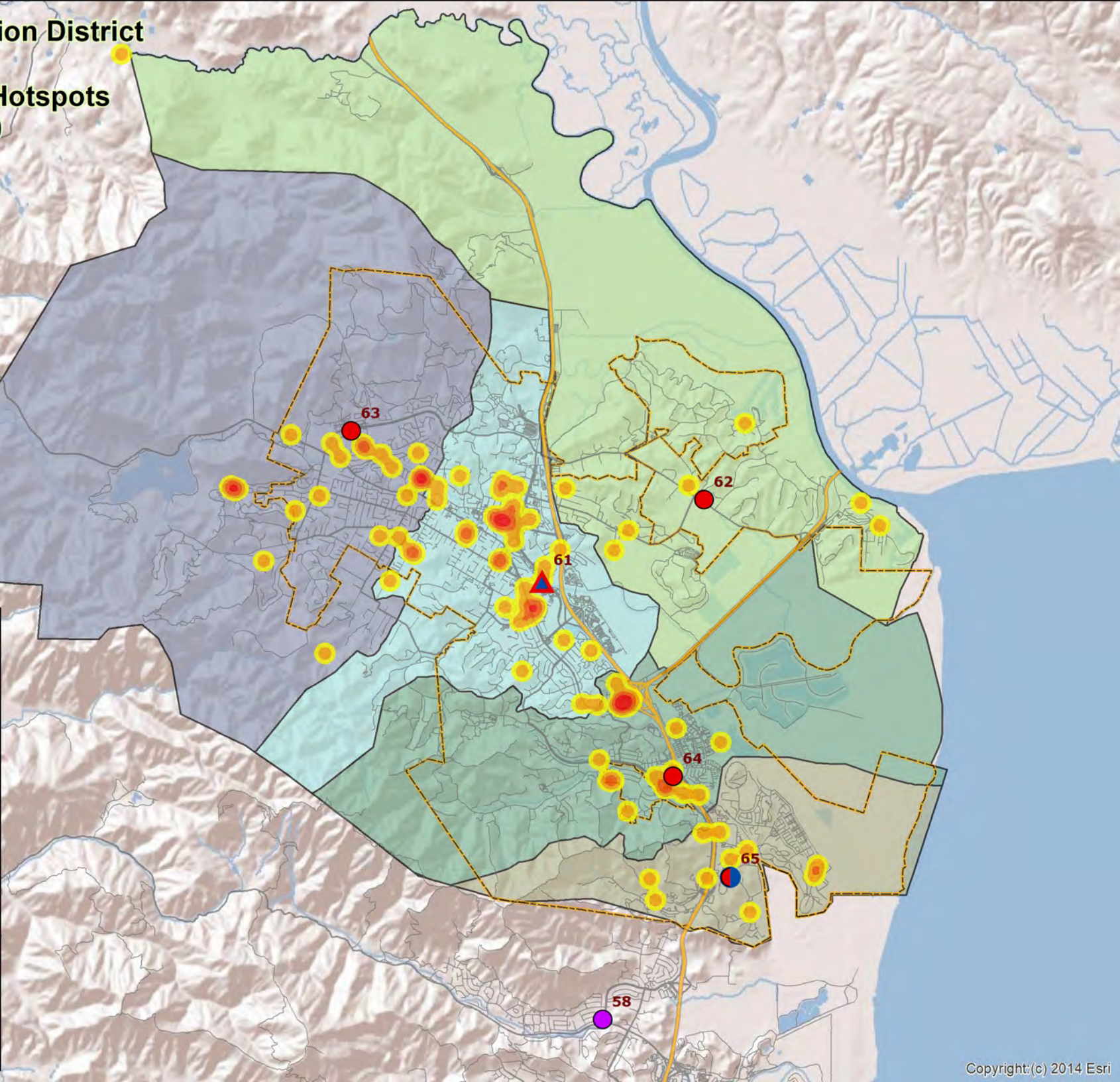
**Legend**

**Fire Stations**

- Engine
- Engine, Medic
- ▲ Engine, Medic, BC
- MA

**NFPD Response Areas**

- 61
- 62
- 63
- 64
- 65

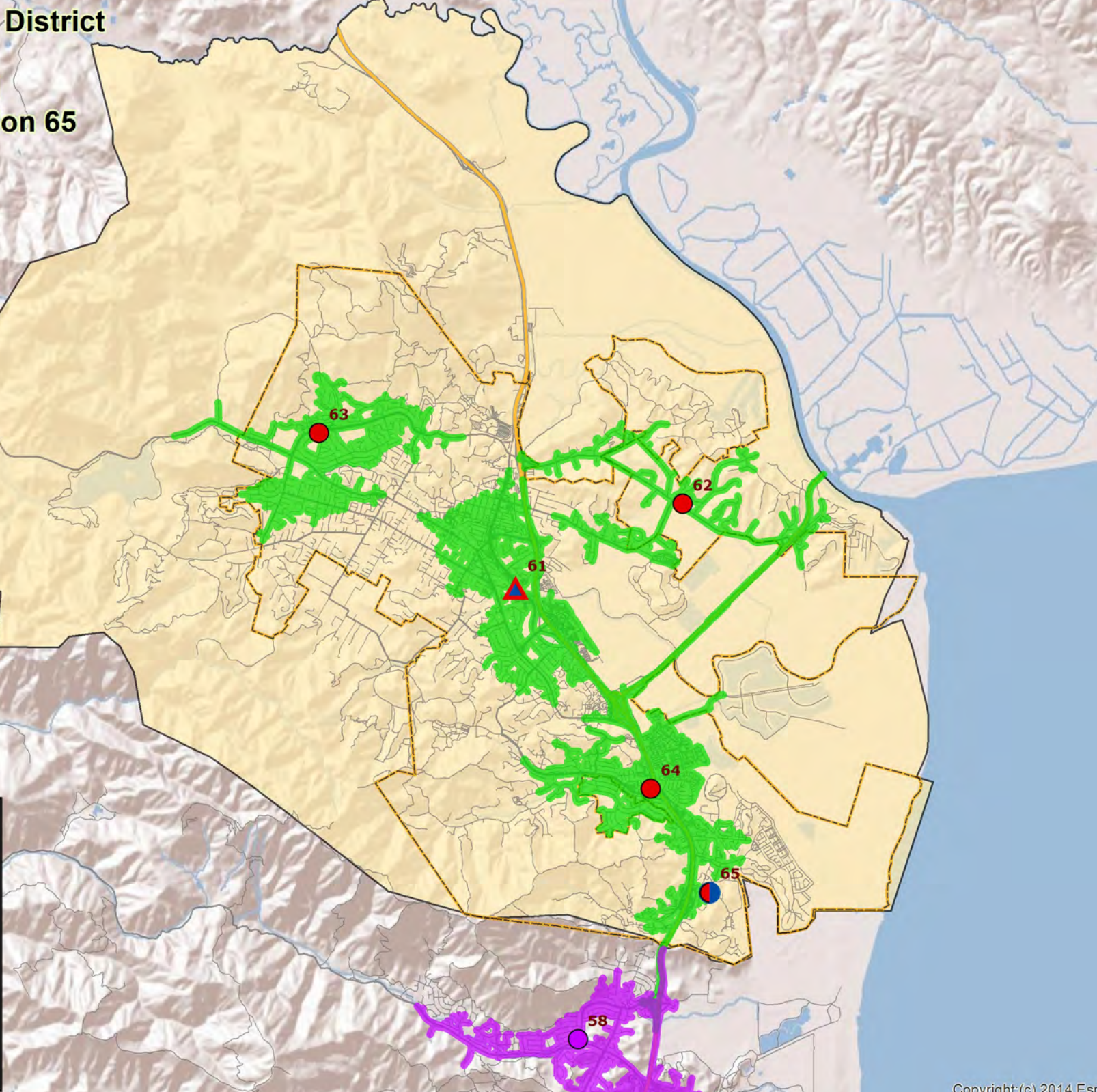


**Novato Fire Protection District  
Map 3a  
4 Minute Engine Travel  
With Auto Aid, No Station 65**

**Legend**

**Fire Stations**

- Engine
- Engine, Medic
- ▲ Engine, Medic, BC
- MA
- Novato Fire Protection District

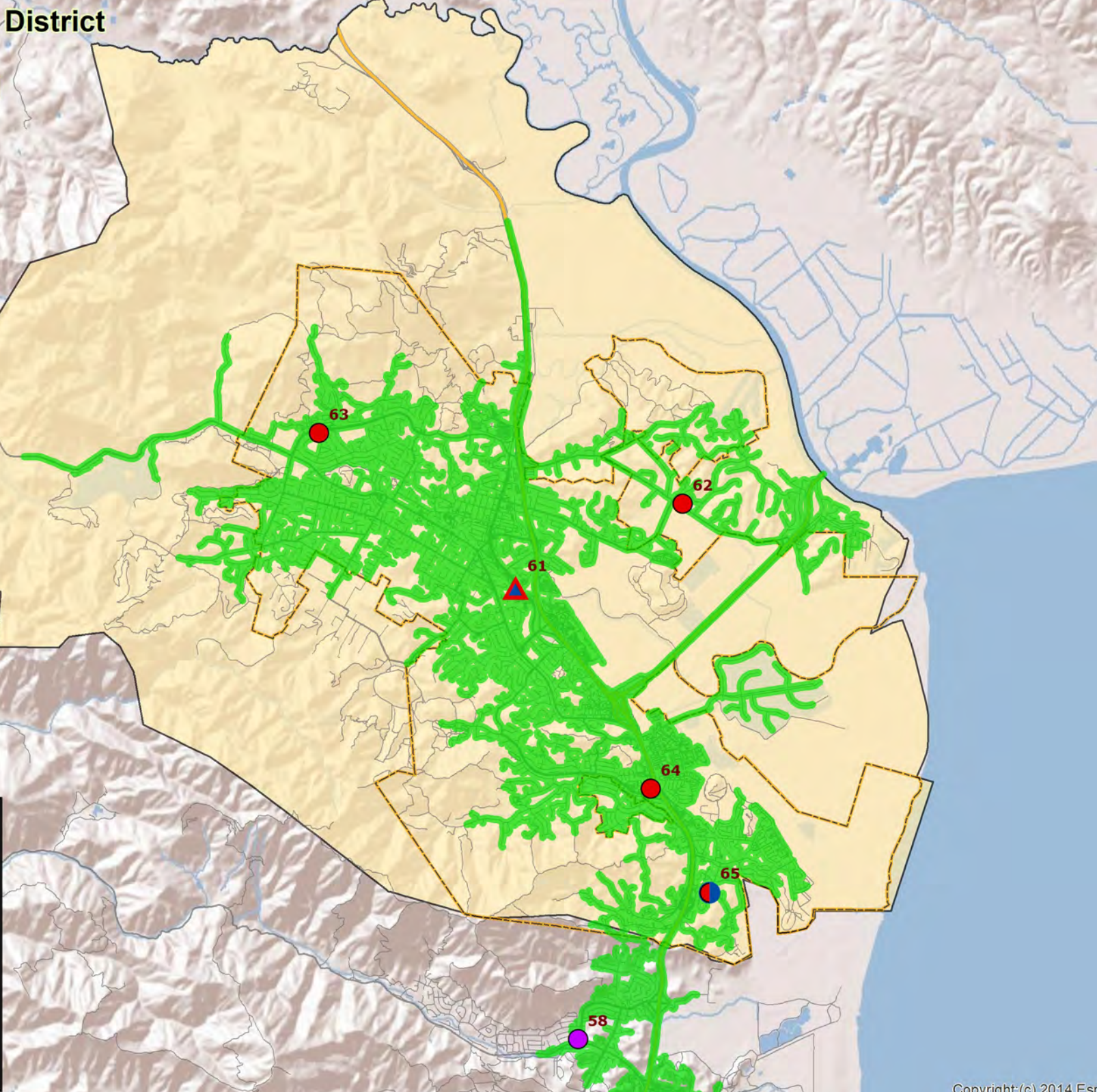


**Novato Fire Protection District  
Map 3b  
6 Minute Engine Travel  
Without Station 65**

**Legend**

**Fire Stations**

- Engine
- Engine, Medic
- ▲ Engine, Medic, BC
- MA
- Novato Fire Protection District



**Novato Fire Protection District**  
**Map 5a**  
**ERF Travel Time 11:30**  
**3 Engines, 1 Truck, 1 Medic, 1 BC**  
**Without Station 65**

**Legend**

**Fire Stations**

- Engine
- Engine, Medic
- ▲ Engine, Medic, BC
- MA
- Novato Fire Protection District

